

SST Multiport Serial Adapters

Universal Bus-Based Solutions: Available from 4 to 128 Ports

FEATURES AND BENEFITS

- **Universal Connectivity**
Supports 3.3V or 5V PCI bus.
- **Offloading**
Offloads virtually all serial processing from the host CPU.
- **Surge Protection**
Each adapter includes 15K volt surge protection on every pin of every port.
- **Auto-Install**
Easy to install and configure with the "auto-install" feature; no IRQ, I/O ports or memory holes to specify.
- **Modem Control/Signals**
Retail POS: TXD, RXD, DCD, CTS, DTR or RTS.








Multiport and Expandable: TXD, RXD, CTS, RTS, DSR, DCD, DTR, RI.
- **Speed**
Retail POS: Speeds up to 230 Kbps, full duplex.

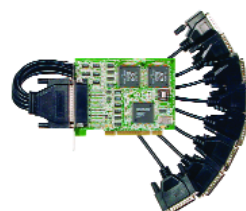
Multiport: Speeds up to 920 Kbps, full duplex (4 and 8-port adapters); 230 Kbps, full duplex (16-port adapter).

Expandable: Speeds up to 115 Kbps, full duplex with 16-port modules, and up to 230 Kbps, full duplex using 8-port modules.

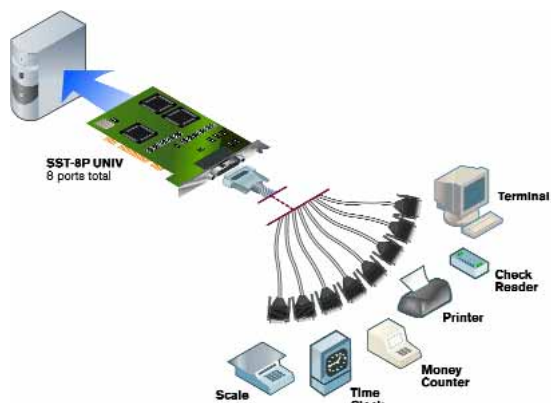
Serial adapters support both a 3.3V or 5V PCI bus with unmatched speed, reliability and superior performance.

Designed for ultimate flexibility, multiport universal serial adapters are available with support for 4 to 128 ports. These intelligent leading-edge universal adapters support a 3.3V or a 5V PCI bus which offload virtually all serial traffic from your system CPU so servers won't slow down as I/O demand increases. Engineered for reliability, SuperSerial adapters include 15,000 volt surge suppression on every pin of every port eliminating blown ports from transient electrical spikes. With unmatched speed, surge suppression and superior performance, these intelligent adapters provide cost-effective, reliable connections to serial devices under most popular operating systems. Serial adapters used in conjunction with port modules and connector panels offer flexible distance options. Equinox serial adapters offer a variety of choices for retail/POS, multiport and expandable connectivity.

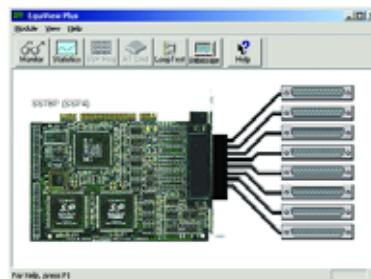
Retail POS Adapters 4 and 8 ports	Multiport Adapters 4, 8 and 16 ports	Expandable Adapters 64 and 128 ports
 SST-4P/RJ UNIV	 SST-4P/LP UNIV* <small>* Includes low profile and standard height bezels.</small>	 SST-64P UNIV
 SST-8P/RJ UNIV	 SST-8P UNIV	 SST-16P UNIV
		 SST-128P UNIV



Fan-out cables, port modules and connector panels are available with DB-25, DB-9 or RJ-45 connectors to provide greater flexibility when connecting serial devices.



A variety of applications use multiport adapters and fan-out cables to connect serial devices such as terminals, printers, time clocks, check readers, money counters and scales.



Serial devices connected to serial adapters may be monitored and managed on a port by port basis with EquiView Plus for Windows and SSDIAG for UNIX.

TECHNICAL SPECIFICATIONS

	SST-4P/RJ UNIV* (6-wire)		SST-8P/RJ UNIV* (6-wire)		SST-4P/LP UNIV* (10-wire) Requires fan-out cable		SST-8P UNIV* (10-wire) Requires CP8-DB or fan-out cable		SST-16P UNIV (10-wire) Requires CP-16 DB-25/RJ-45		SST-64P UNIV (10-wire) Requires PM16		SST-128P UNIV (10-wire) Requires PM16		PM16-RJ, Female RJ-45		PM16-RJ 422, Female RJ-45		PM16-DB, Female RJ-45		CP8-DB, Female DB-25 Requires SST-8P UNIV		CP16-DB, Male DB-25 Requires SST-8P UNIV		CP16-RJ, Female DB-25 Requires SST-8P UNIV		CP16-DB, Female DB-25 Requires SST-16P UNIV		CP16-DB, Male DB-9 Requires SST-16P UNIV				
PART #	990454	990452	990449	990429	990439	990430	990431	990232	990322	990245	990343	990327	990328	990422																			
MSRP	\$ 395	\$ 495	\$ 445	\$ 545	\$ 595	\$ 795	\$ 1,095	\$ 795	\$ 795	\$ 795	\$ 110	\$ 595	\$ 595	\$ 595																			
POWER																																	
3.3V (mA)	<20	<20	<20	<20	<20	<20	<20	N/A	N/A	N/A	N/A			<20																			
5V (mA)	350	500	440	620	1000	700	1000	1250	1250	1250	N/A	See	See	1200																			
12V (mA)	35	70	60	110	175	N/A	N/A	N/A	N/A	N/A	N/A	990439	990439	70																			
-12V (mA)	-45	-90	-70	-100	-150	N/A	N/A	N/A	N/A	N/A	N/A			-90																			
DIMENSIONS	3.90" H 0.75" W 6.10" D	4.00" H 0.75" W 5.60" D	2.60" H 0.75" W 4.70" D	4.20" H 0.75" W 5.70" D	4.20" H 0.75" W 5.30" D	4.00" H 0.75" W 5.60" D	4.00" H 0.75" W 5.60" D	0.96" H 5.56" W 9.50" D	0.96" H 3.22" W 9.50" D	1.25" H 3.22" W 9.50" D	8.00" H 3.75" W 8.00" D	0.88" H 5.50" W 9.62" D	0.88" H 3.38" W 9.62" D	0.88" H 3.38" W 9.62" D																			
SHIPPING WEIGHT	1.00 lb.	1.00 lb.	1.00 lb.	1.00 lb.	1.00 lbs.	2.00 lbs.	3.00 lbs.	2.00 lbs.	2.00 lbs.	3.00 lbs.	1.20 lbs.	2.00 lbs.	2.00 lbs.	2.00 lbs.																			
SPEED (Kbps)	230	230	920	920	230	230	230	N/A	N/A	N/A	N/A	N/A	N/A	N/A																			
MODEM CONTROL	Partial	Partial	Full	Full	Full	Full	Full	Full	None	Full	Full	Full	Full	Full																			
SURGE SUPPORT	Surge suppression on every pin of every port							Surge suppression on every pin of every port																									
OS SUPPORT																																	
Windows NT	●	●	●	●	●	●	●																										
Windows 2000	●	●	●	●	●	●	●																										
Windows 2003	●	●	●	●	●	●	●																										
Windows XP	●	●	●	●	●	●	●																										
Citrix	●	●	●	●	●	●	●																										
Linux	●	●	●	●	●	●	●																										
SCO OpenServer	●	●	●	●	●	●	●																										
SCO UnixWare	●	●	●	●	●	●	●																										
Sun Solaris-Intel	●	●	●	●	●	●	●																										

Fan-out Cables (MSRP \$50)

4-Port Cables	Part #
FO4-DB-9/LP, Male	690347
FO4-DB-25/LP, Male	690356
FO4-RJ-45/LP, Female	690355
8-Port Cables	
FO8-DB-25, Male	690264
FO8-RJ-45, Female	690265
FO8-DB-9, Male	690271

CONFORMANCE

UL US LISTED **CE**
 FCC P. 15 Class A, CE, UL60950 3rd Ed., CAN/CSA C22.2 No. 60950-00

ENVIRONMENTAL

Operating temperature: 0° - 40° C
 Humidity: 10% to 90% (Non-condensing)

WARRANTY

All SST serial adapters, port modules and connector panels have a five-year warranty.



* Available in 10-Packs.