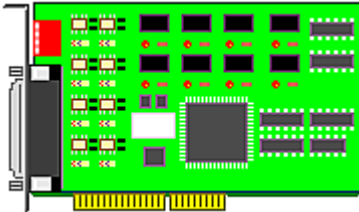


309-2

SMATLAB
INDUSTRIAL AUTOMATION SERIES



USER'S MANUAL FOR PCI 8 CHANNEL RELAY OUTPUT / 8 PHOTO-ISOLATOR INPUT CARDS



PCI bus 8 channels relay / output photo isloator input adapter

Product Code: 8PCIPHOTO/RELAY

INTRODUCTION

The PCI bus 8 channels relay output / photo isolator input adapter is a 32 bits PCI bus board with Plug and Play (PnP) features, it is a programmable I/O interface card for PC/486, Pentium, or compatibles. The PnP features let hardware configuration for IRQ and I/O address is detected by BIOS automatically, you don't need set switch and jumper.

The PCI bus 8 channels relay output / photo isolator input adapter provides relay output functions and photo isolator input functions. The relay output part provides 8 relays to drive 8 different output channels. Each relay channel can be used to control ON / OFF of external devices, to drive external high power relays, to activate alarms ... etc. The photo isolator input part provides 8 photo couple digital input channels, which allow the input signals to be completely floated and prevent the ground loop.

Please refer Decision Industrial Interface (DII) Software manual to know how to install device driver for PCI bus 8 Port Channels Relay Output/ Photo Isolator Input adapter, and how to write application program by using Active-X Components.

The features of the PCI bus 8 channels relay output / 8 photo isolator input adapter are:

1. 32 bits PCI bus with Plug and Play (PnP) features.
2. Support 8 relay output channels and 8 photo couple input channels.
3. Max contact rating for relay: 120V AC/DC 1AMP.
4. Attraction time for relay: 3 ms.
5. Fall off time for relay: 2 ms.
6. Isolation resistance for relay: 100M OHM.
7. Life expectancy for relay: 100 million operations at signal level load.
8. Allow the photo input signals to be completely floated and prevent the ground loops.
9. Activation voltage: 0 to 30V or Switch.

The package includes following item

Check that your PCI bus 8 channels relay output/photo isolator input package includes the following items:

1. PCI bus 8 channels relay output/photo isolator input board.
2. Demo Program.

3. User manual.
4. Warranty form.



HARDWARE INSTALLATION

Your PCI 8 channels relay output/photo isolator input adapter is designed to be inserted in any available PCI slot in your PC/486, Pentium or compatibles. In order to gain access to the expansion slots, follow the steps listed below:

1. Turn off all power to your computer and all peripheral devices before installing your 8 channels relay output/photo isolator input adapter.
2. Remove the cover of the computer.
3. Insert the 8 channels relay output/photo isolator input adapter into any available PCI slot. Make sure the adapter is firmly seated in the chosen slot.
4. Replace the cover of the computer.
5. Turn on the power of your computer, the PnP features will recognize the 8 channels relay output/photo isolator input adapter.

HARDWARE CONFIGURATION

Before you use the 8 channels relay output/ photo couple input adapter, you must ensure that the I/O address. Observe the figure in the follows, the proper jumper settings for the 8 channels relay output/photo couple input adapter is described in the following.

1. I/O Address

The PnP feature will get base I/O address automatically, where

Base Address + 0:

Relay output channel 1 to

7	6	5	4	3	2	1	0
RL8	RL7	RL6	RL5	RL4	RL3	RL2	RL1

Base Address + 1:

Photo isolator input channel 1 to 8.

7	6	5	4	3	2	1	0
IN8	IN7	IN6	IN5	IN4	IN3	IN2	IN1

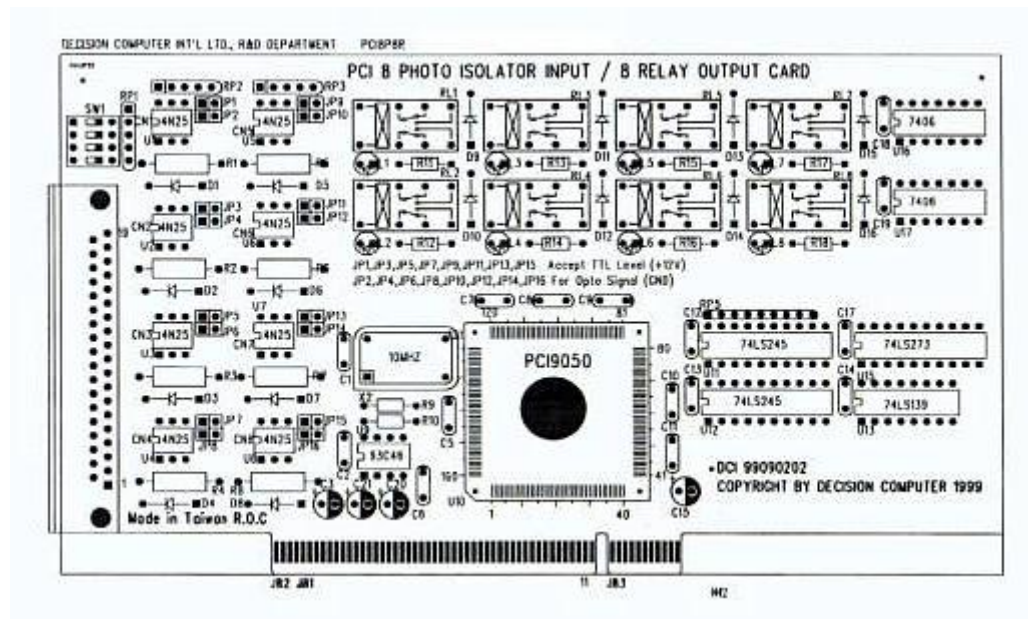
2. Jumper Setting

Jumper	Description
Open	Select Voltage Signal Input
Short	No Voltage Signal Input

The JP1 and JP2 are used to select voltage signal of photo input channel 1, and the JP3 and JP4 are used to select voltage signal of photo input channel 2, Ketc. When we open both jumpers, it means the opto+ and opto- signals contains voltage; otherwise, when the jumpers are short, it means opto+ and opto- contain no voltage signal, it only represent ON/OFF connection point.

3. DB37 Connector Assignments

Pin	Description
1	Relay channel 1, NO
2	Relay channel 1, COM
3	Relay channel 1, NC
4	Relay channel 2, NO
5	Relay channel 2, COM
6	Relay channel 2, NC
7	Relay channel 3, NO
8	Relay channel 3, COM
9	Relay channel 3, NC
10	Relay channel 8, NO
11	Relay channel 8, COM
12	Opto channel 1, +
13	Opto channel 2, +
14	Opto channel 3, +
15	Opto channel 4, +
16	Opto channel 5, +
17	Opto channel 6, +
18	Opto channel 7, +
19	Opto channel 8, +
20	Relay channel 4, NO
21	Relay channel 4, COM
22	Relay channel 4, NC
23	Relay channel 5, NO
24	Relay channel 5, COM
25	Relay channel 6, NO
26	Relay channel 6, COM
27	Relay channel 7, NO
28	Relay channel 7, COM
29	GND
30	Opto channel 1, -
31	Opto channel 2, -
32	Opto channel 3, -
33	Opto channel 4, -
34	Opto channel 5, -
35	Opto channel 6, -
36	Opto channel 7, -
37	Opto channel 8, -



Technical data - Isolated input Output and Relay Output
Isolated input: The digital signal input with isolated protection.

Photo Isolator :







[Word File 4N35](#)

[Hyper Link](#)

Relay :

[Word File BT-12S](#)

[Hyper Link](#)

- [Catalog](#) 
- [Manual](#) 
- [Device Driver](#) 
- [Self Test Software & Sample Code](#) 
- [Web Based DAQ](#) 
- [Application](#) 
- [Q&A](#) 