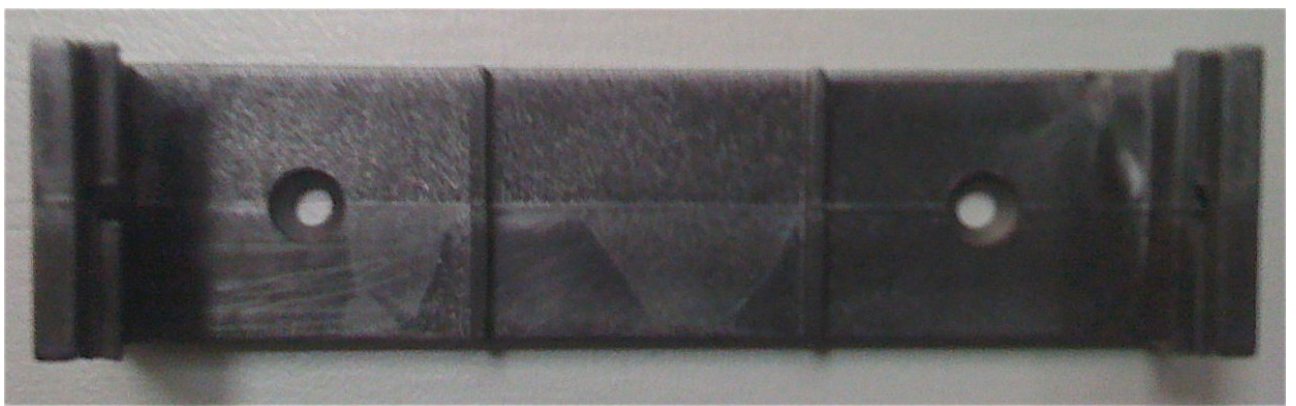


## Barix Mounting Bracket Datasheet

### Introduction:

This document describes the Barix accessory Ex-/Instreamer mounting bracket, Part number 2006.9072, which can be used to secure the devices within their operating environment.

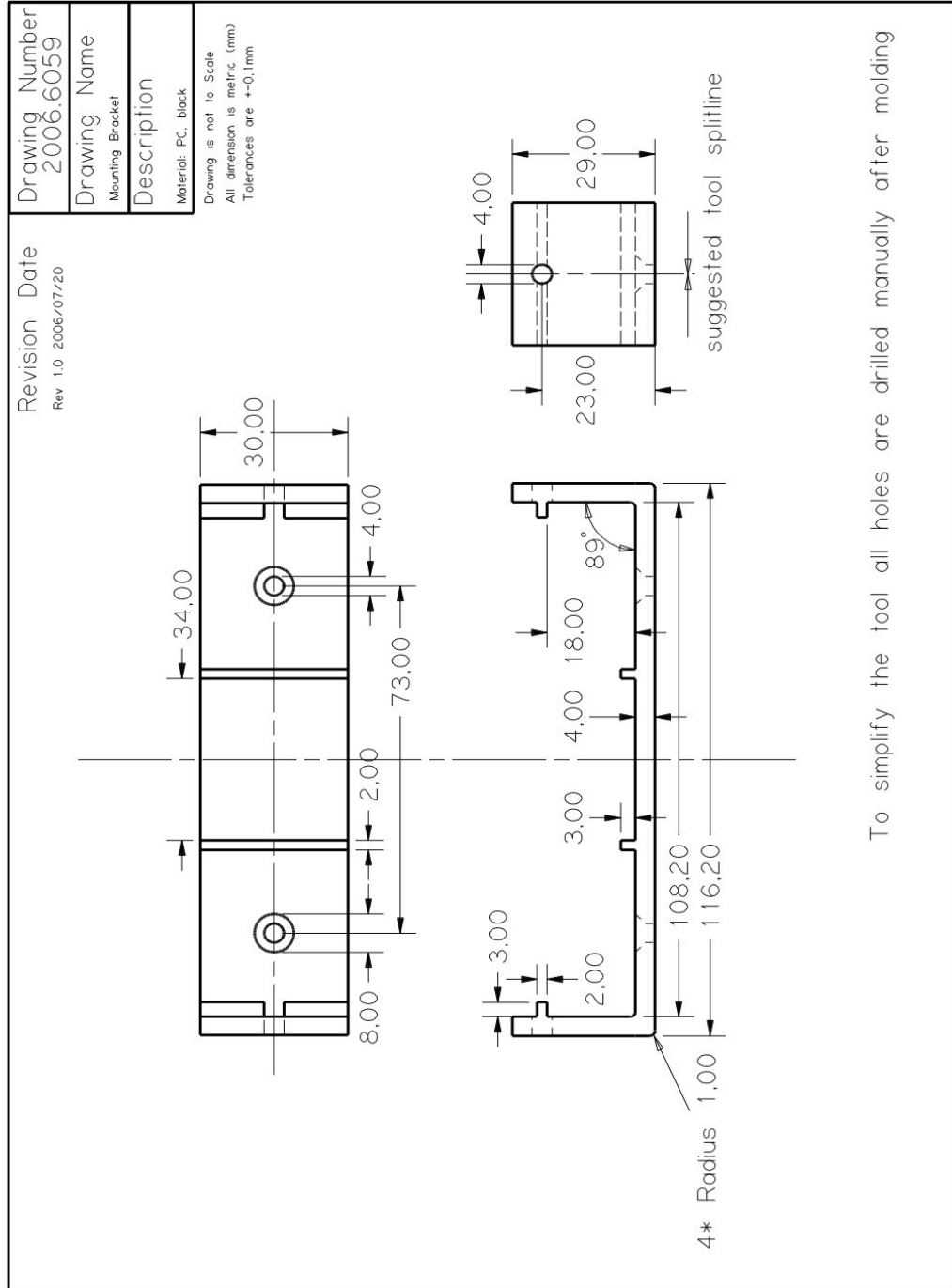


### Features overview:

- 1 Manufactured from a single piece of black coloured PC plastic.
- 2 Can be used in conjunction with Moxa DK-35A, to enable devices to be DIN rail mounted
- 3 Suitable for use with all Barix 1/4 19" rack width audio devices:
  - Exstreamer 100, 110, 200
  - Instreamer 100
  - Annunicom 100, 200

### Mounting the equipment:

1. Fix the bracket in the desired position first, or attach the Moxa DK-35A DIN mounting parts to the bracket using a pair of screws.
2. Slide the Barix device in to the bracket from the rear plate – the Barix devices are designed such that they can not slide out (or in) from the front plate. Note: all Barix devices are manufactured very precisely, so it is important that the bracket and device are correctly aligned before sliding the device into position.
3. Attach the cables to the device
4. When removing devices from the bracket, please note that they sometimes catch against the rear plate; bending the bracket slightly will enable the device to be removed, should this happen.



To simplify the tool all holes are drilled manually after molding