

CN-6000

Remotely manage server room operations from anywhere, anytime

- ↳ Browser based server control under MS Windows
- ↳ Maximum video resolution up to 1600 x 1200

KVM on the NET™



Features

- Browser based server control under MS Windows
- Designed for both the desktop and rack mounting - the smallest footprint on the market, 0U rack mountable, mount it together with your KVM Switch.
- F/W Upgradable via RJ-45 Ethernet connection.
- Advanced security features: RSA 1024 bit
- Maximum video resolution up to 1600 x 1200

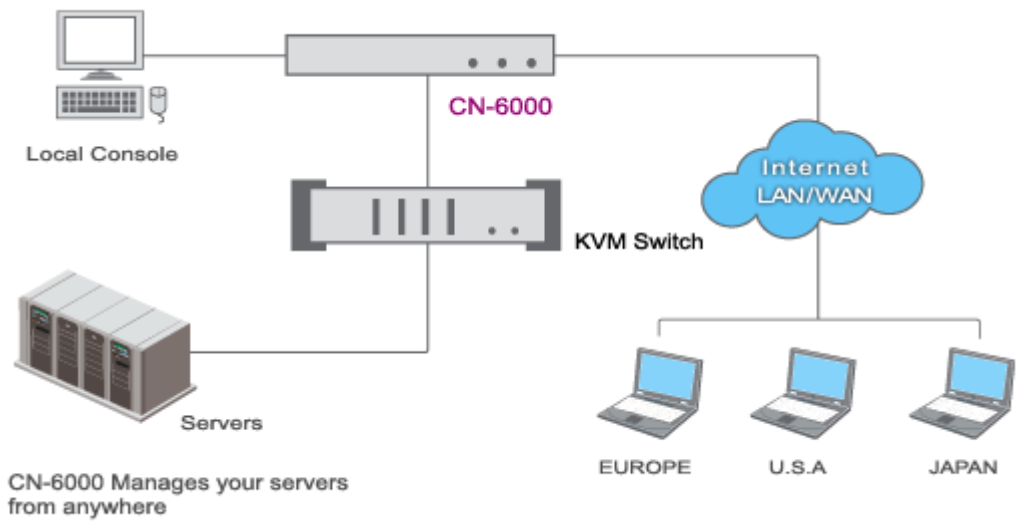
⇒ Front View



→ Back View



→ CN-6000 Diagram



Specification

Function		Specification	
System Requirement (Remote Client)		Pentium III 1GHz (Minimum)	
Connectors	Local Console	K/B	1 x Mini-DIN-6 F(Purple)
		Video	1 x HDB-15 F(Blue)
		Mouse	1 x HDB-15 F(Blue)
	System (KVM)		1 x SPHD -15 F(Yellow)
	LAN Port		1 x RJ - 45(F)
	Serial device & Power on the net (reserved)		1 x DB9(M)
	Power Jack		1
Button/Switch	KVM Reset		1 x Semi-hidden@front
	Upgrade / Recover Slide switch		1 x 2-way
LEDs	On Line		1 x orange
	Selected		1 x green
	10/100 Mbps		1 x orange / green
Protocol Support		RJ45 twisted pair cable, 10baseT Ethernet and 100baseTX Fast Ethernet. TCP/IP	
Reset Switch		1 x momentary switch	
VGA Resolution		Up to 1600 x 1200 60Hz	
Housing		Metal	
Dimensions (L x W x H)		200 x 80 x 25mm	